

## COMMERCIAL DOCUMENTATION



## SANDWICH PANEL ANCHOR SYSTEM | TVA PANEL TIE - CLIP ON HAIRPIN

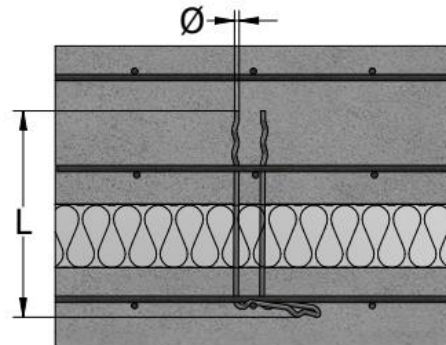


## PANEL TIE –CLIP ON HAIRPIN "TVA"

The clip-on TVA hairpin is made of stainless steel AISI 316 wire (W1.4401 – A4 quality) available in diameters 3.0 mm, 4.0 mm and 5.0 mm in a "U" shape. The closed end is bent at a 90° angle.

The clip-on TVA hairpin is mainly used in the positive production method for sandwich panels. These hairpins have to be installed in a node of the reinforcement mesh before the concrete is poured. This type of installation ensures a minimum embedment depth.

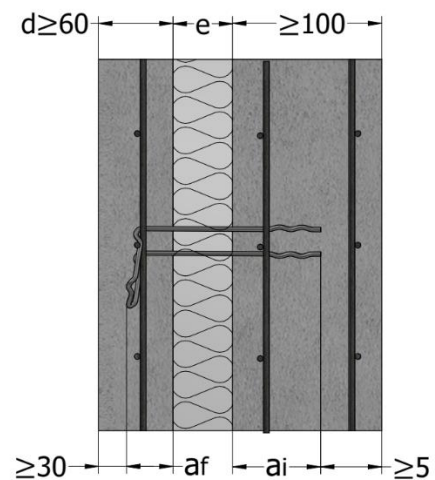
PANEL TIE CLIP ON HAIRPIN "TVA"



The available panel ties TVA are presented in Table 42 below:

Table 42

Wire diameter Ø mm	Clip on hairpin TVA	Product no.	Length L mm
3	3.0 -120	43397	120
	3.0 -140	43398	140
	3.0 -160	43399	160
	3.0 -180	65963	180
	3.0 -190	43400	190
4	4.0 -160	43401	160
	4.0 -200	43402	200
	4.0 -230	43575	230
	4.0 -250	43403	250
	4.0 -280	43404	280
5	5.0 -200	43405	200
	5.0 -240	64245	240
	5.0 -250	43406	250
	5.0 -260	64246	260
	5.0 -280	43407	280
	5.0 -300	64247	300
	5.0 -320	43408	320
	5.0 -360	64372	360
	5.0 -375	64411	375



**Note:**  
 $a_f \geq 30 \text{ mm}$ ,  $a_i \geq 55 \text{ mm}$ .  
 $a_f \geq 35 \text{ mm}$  for  $d_{min} \geq 70 \text{ mm}$

**Concrete quality:**  
Façade layer  $\geq \text{C30/37}$   
Load bearing layer  $\geq \text{C30/37}$ .

**Reinforcement:**  
Reinforcing mesh B500B  
Rebar reinforcement B500B

**Minimum reinforcement for the façade layer:**  
Square reinforcement mesh  $1.3 \text{ cm}^2/\text{m}$

## CONTACT



TERWA is the global supplier for precast and construction solutions with multiple offices around the world. With all our staff, partners and agents, we are happy to provide all construction and precast companies who work in the building industry with full service and 100% support.

### TERWA CONSTRUCTION GROUP

#### Terwa Construction Netherlands (HQ)

**Global Sales & Distribution**  
Kamerlingh Onneslaan 1-3  
3401 MZ IJsselstein  
The Netherlands  
**T** +31-(0)30 699 13 29  
**F** +31-(0)30 220 10 77  
**E** [info@terwa.com](mailto:info@terwa.com)

#### Terwa Construction Central East Europe

**Sales & Distribution**  
Strada Sânzieni  
507075 Ghimbav  
Romania  
**T** +40 372 611 576  
**E** [info@terwa.com](mailto:info@terwa.com)

#### Terwa Construction Poland

**Sales & Distribution**  
Ul. Cicha 5 lok. 4  
00-353 Warszawa  
Poland  
**E** [info@terwa.com](mailto:info@terwa.com)

#### Terwa Construction India & Middle East

**Sales & Distribution**  
India  
**T** +91 89 687 000 41  
**E** [info@terwa.com](mailto:info@terwa.com)

#### Terwa Construction China

**Sales & distribution**  
5F 504, No. 101 Chuanchang road  
PRC, 200032, Shanghai  
China  
**E** [info@terwa.com](mailto:info@terwa.com)

**ALL SPECIFICATIONS CAN BE CHANGED WITHOUT PREVIOUS NOTICE.**

### DISCLAIMER

Terwa B.V. is not liable for deviations due to wear of the products it has delivered. Neither is Terwa B.V. liable for damage due to inaccurate and/or improper handling and use of the products it has delivered and/or use of same for purposes other than those intended.

Terwa B.V.'s responsibility is furthermore limited in accordance with article 13 of the "Metaalunie" conditions, which are applicable for all Terwa B.V. deliveries. The user is responsible for ensuring compliance with all applicable copyright laws. Without limiting the rights under copyright, no part of this documentation may be reproduced, stored in or introduced into a retrieval system, or transmitted in any form or by any means (electronic, mechanical, photocopying, recording, or otherwise), or for any purpose, without the express written permission of Terwa B.V.